

\* 4" EXISTING RAILING PARAPET

Ø ASPHALT OR CONCRETE CURB

FOR INFORMATIONAL PURPOSES ONLY

GENERAL NOTES

FOR ADDITIONAL INFORMATION ON GUARD RAIL, SEE STANDARD PLANS FOR HIGHWAY GUARD RAIL (MASH).  
 ALL DIMENSIONS SHALL BE VERIFIED IN THE FIELD BY THE CONTRACTOR AND APPROVED BY THE PROJECT ENGINEER.  
 ○ FOR CURB & TRANSITION INFORMATION, SEE STANDARD PLANS FOR HIGHWAY GUARD RAIL (MASH), SHEET 3 OF 11.

GUARD RAIL ANCHOR BLOCKS

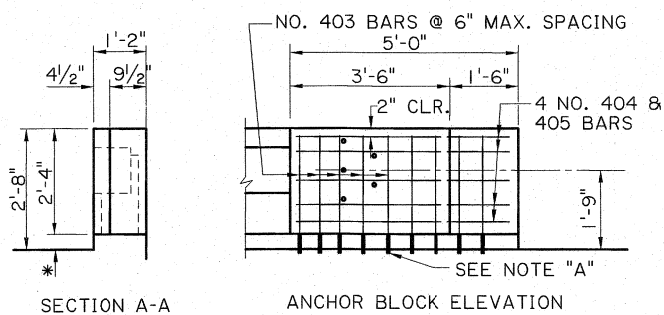
ALL WORK AND MATERIALS REQUIRED TO REMOVE EXISTING RAILING AND CONSTRUCT THE ANCHOR BLOCK SHALL BE PAID FOR UNDER: GUARD RAIL ANCHOR BLOCK, PER EACH, ITEM 704-09-00100

CONCRETE IN CROSS HATCHED AREA SHALL BE REMOVED. THE EXISTING REINFORCING STEEL SHALL REMAIN IN PLACE AND SHALL BE CLEANED AND STRAIGHTENED TO THE SATISFACTION OF THE PROJECT ENGINEER BEFORE POURING NEW CONCRETE. THE REINFORCING STEEL IN THE 1'-6" X 4 1/2" SLOT MAY BE CUT OR BENT TO ACCOMMODATE THIS SLOT.

NOTE "A"

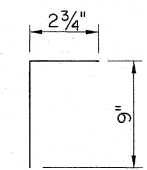
NO. 401 & 403 BARS SET IN 3/4" Ø DRILLED HOLES. CLEAN HOLES WITH COMPRESSED AIR AND MAKE THEM FREE OF ANY OIL OR RESIDUE. FILL HOLES WITH A TYPE IV, GRADE 2 OR 3 EPOXY LISTED ON THE APPROVED MATERIALS LIST, PRODUCT CATEGORY "EPOXY RESIN SYSTEMS". PLACE BARS IN HOLES AND WAIT THE MANUFACTURER'S CURE TIME BEFORE POURING NEW CONCRETE.

THIS DETAIL WAS DEVELOPED AND APPROVED FOR USE UNDER NCHRP REPORT 350. AS PER LADOT'S MASH IMPLEMENTATION POLICY, ITS CONTINUED USE IS ALLOWED WHILE A MASH ALTERNATIVE IS DEVELOPED OR EVALUATED.

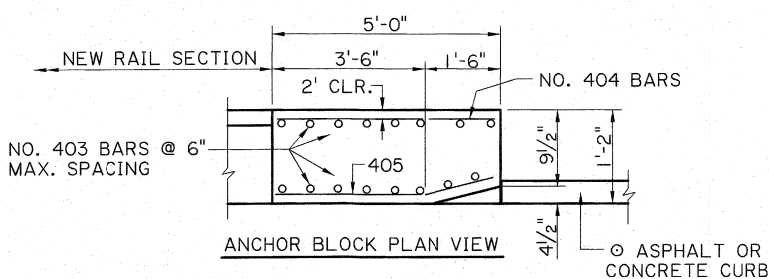


SECTION A-A

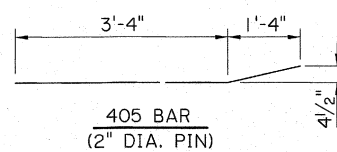
ANCHOR BLOCK ELEVATION



401 BARS (2" DIA. PIN)



ANCHOR BLOCK PLAN VIEW



405 BAR (2" DIA. PIN)

SHEET NUMBER	
PARISH	CONTROL SECTION
STATE PROJECT	
DESIGN CHECK	REVIEW
DETAIL CHECK	SERIES
P. FOSSIER	K. BRAUNER
C. GAUDRY	
J. DOUCET	
P. FOSSIER	

APPROVED BY CHIEF ENGINEER: *[Signature]* DATE: 5/3/2022

STATE OF LOUISIANA  
 KURT M. BRAINER  
 License No. 30567  
 PROFESSIONAL ENGINEER  
 IN  
 CIVIL ENGINEERING  
 4/22/22

GUARD RAIL ANCHOR BLOCK REHABILITATION FOR CONCRETE POST & RAIL (ALTERNATE 1)

STANDARD PLAN: GRR-04

DOTD  
 LOUISIANA DEPARTMENT OF TRANSPORTATION & DEVELOPMENT  
 BRIDGE AND STRUCTURAL DESIGN